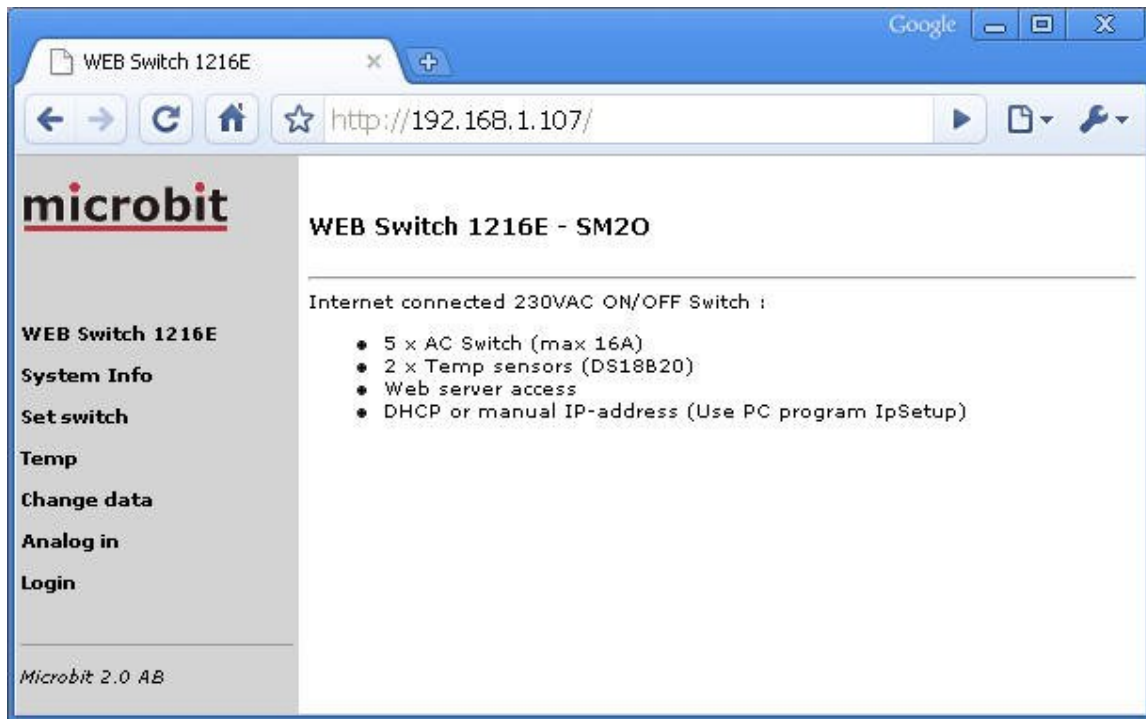


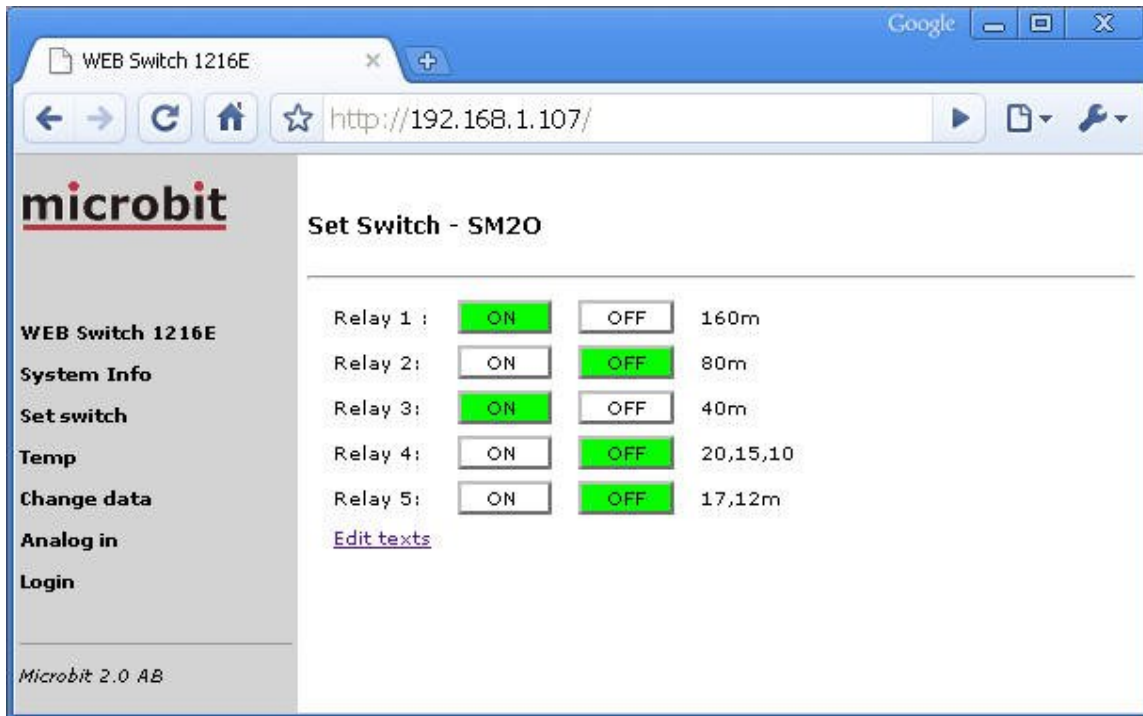
Down below follows more info about the WEB-Switch.



Above: First >age of the WEB-Switch Internal web server. In the example it has the IP-adress 192.168.1.107. To the left there is hyperlinks to other internal information pages.



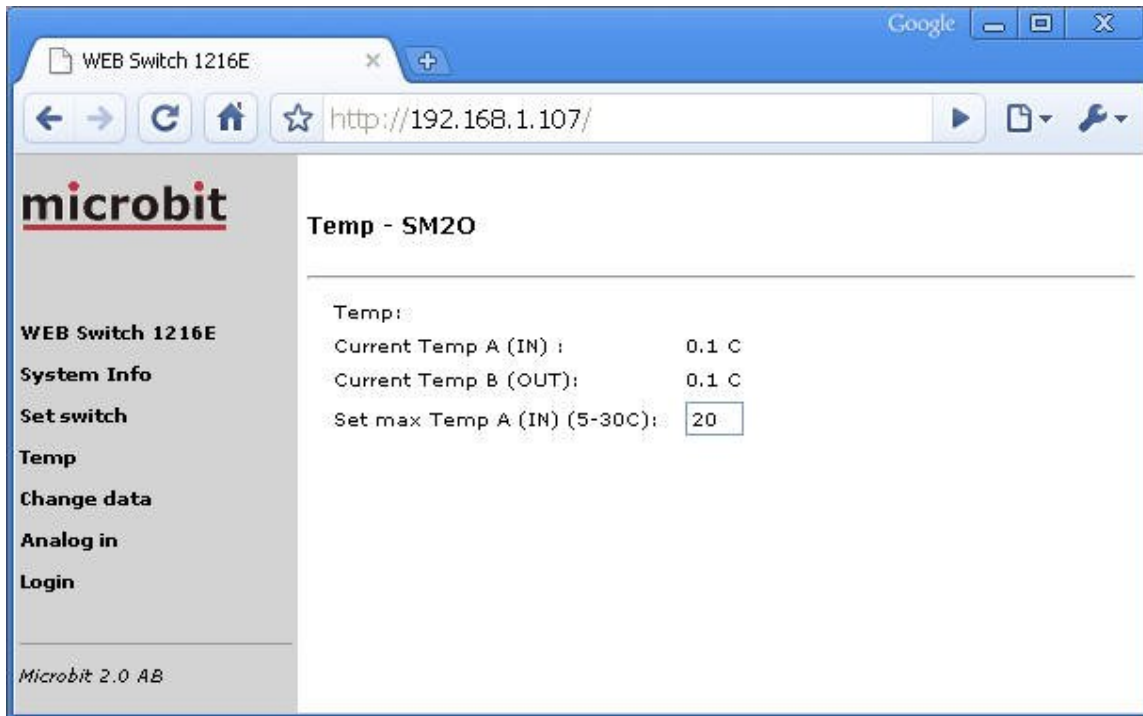
Above: Behind the Link "system" you will find information about the unit. Firmware versions, IP-addresses etc.



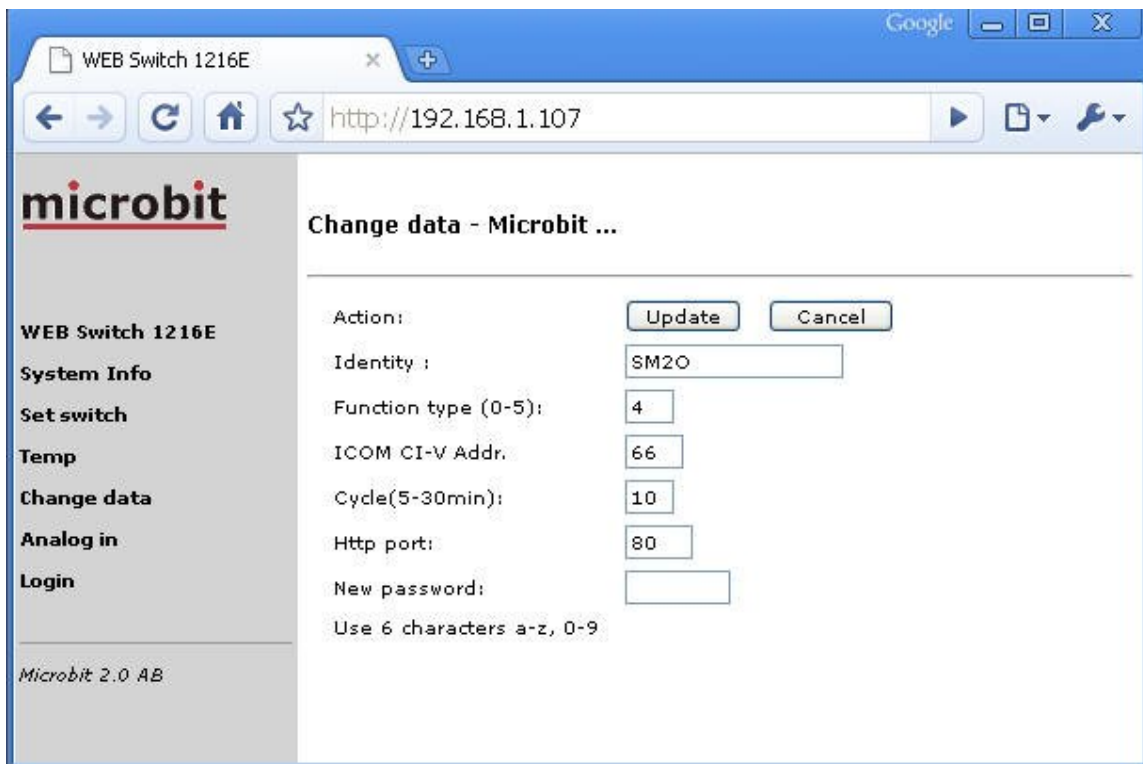
Above: On the webpage behind the link "Set Switch" you can control the relays, the individual statuses is indicated by the green colour. A short describing text can be set to each relay. Be aware of that you need to be logged in to control the relays.



Above: The menu for editing the describing texts. Be aware of that you need to be logged in to editing the texts.

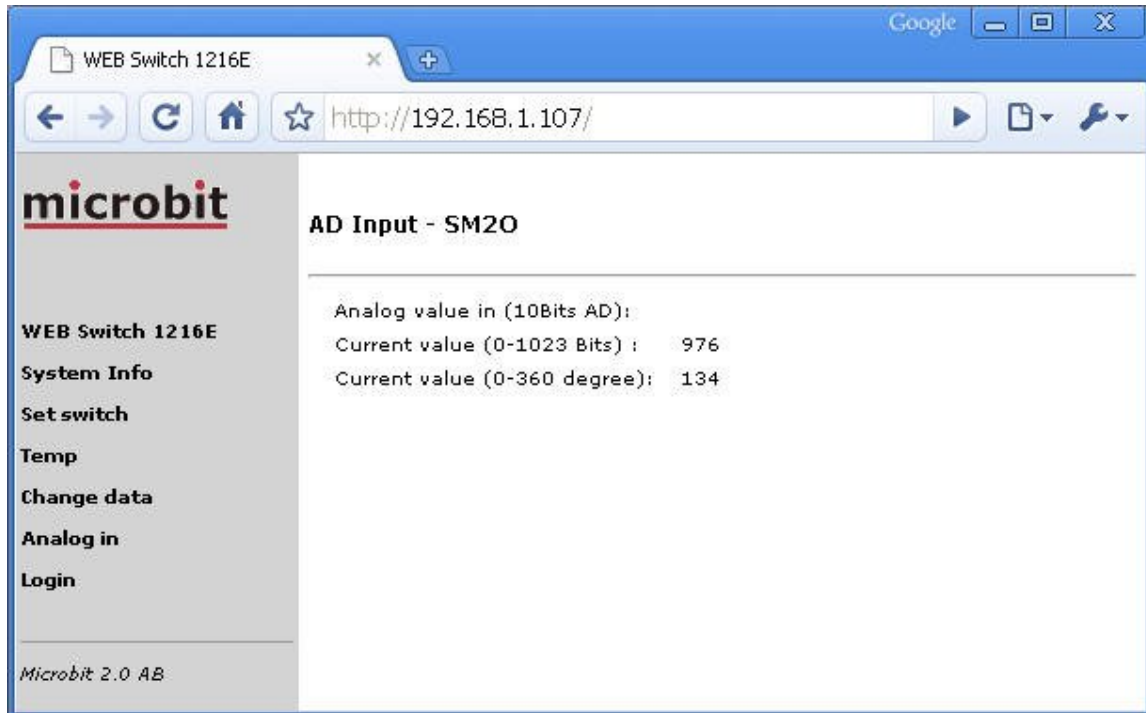


Above: behind the link "Temp" you can check the two temp sensors if they are connected. You can also set the wanted temperature if you use the WEB-switch for temp control.



Above: Behind the link "Change data" you can make some initial settings. Identity <>is the text which is shown on top of most internal web pages. Function type select how you want to use the WEB-Switch. 0= All relays are controlled manually. 1= Relay 1 will act as soft temperature control. Cycle set how long the total control cycle

is, in slow systems like a house you may use 15-20 min, in a small cupboard shorter may times fits better. If cycle time is set to 0 the cycle time is set to 20 s. If you just use the WEB-Switch just for reading temperatures set cycle time to 0 to get shortest possible update time. In the box "Http port" you can change the port for the Internal WEB-server from standard port 80. It can be convenient in combinations with routers and port forwarding. Be aware of when you change IP-address with IP-setup the http port is always set back to 80. In the box "New password" you can change the password which is needed to make setup changes or control the relays. The password will change back to default "1111111" when you change IP-address with IP-setup.



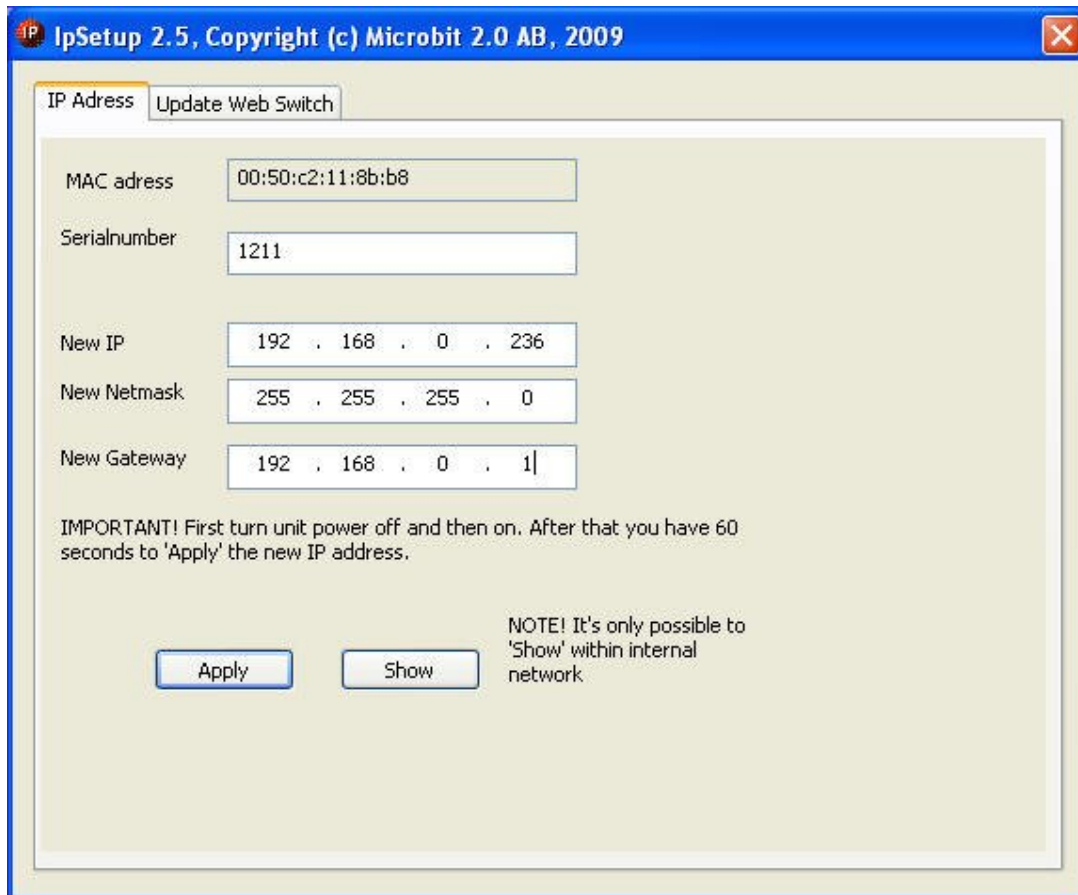
Above: The web-pages for reading the analogue input. The A/D <>converter has 10 bits resolution. 5,0 V input = 1023 or 360 deg. 0 V <>gives 0.



Above: The Login page, fill in the password and click "Login". You do not need to login again until you change your IP-address.

The Software IP-Setup is used to change the IP-address of the WEB-switch. There is no other user Interfaces so we need to use the TCP/IP Network to set the IP-address. It's done from the IP-setup with a encapsulated standard protocol ARP. When you start up the program (no installation needed) you will see the dialog below. When you enter the Serial number of the WEB-switch, IP-Setup calculates the MAC-address <->automatically. The Serial number is available from a sticker on the bottom of the switch. Enter the network parameters on in resp. box. To make the function more secure you need to program it within 60 s from restart. That's why you always should disconnect the WEB-Switch from power for a few seconds before pressing "Apply" to confirm the new settings.

The IP-Setup software is here =>



If the programming succeeded the box below will show up.

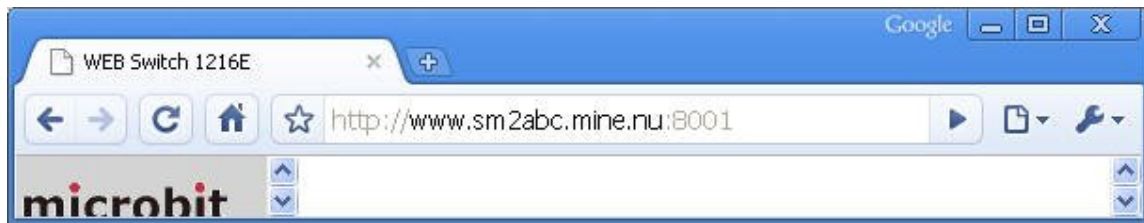


Use your Internet browser to connect to the new IP-Address.

If you will use the WEB-Switch for remote control over the Internet it will most of the times be placed behind a NAT-router, which means it will not be directly accessible from the Internet. Fixed IP-address is also not very common which is another problem. The most common solution to this is to use port forwarding in the router and register a DynDns account (free).

The port forwarding <> makes it possible to setup the router in the way that a "call" from outside to port 8001 is mapped to the Inside IP-address used by the WEB-Switch and to port 80 for example. If the router does not support port translation it's possible to change the http port number in the WEB-Switch. As an example you can set the WEB-Switch http port to 8001 then the router can do a straight mapping (most of the Netgear routers only handles straight mapping).

At www.dyndns.com you can register an account, which gives you a dns host name which can be used for accessing the WEB-switch from the Internet. The router at the remote site must also be programmed to send the IP-address to DynDNS. When you have done that a call to the WEB-Switch can look like the example below.



Almost every router from the commonly used brands supports the DynDNS functionality (even the cheapest ones).

Good luck with the remote control....

Updating the firmware (software)

The internal firmware can be updated via the IP-Setup software. The .BIN file should be updated first and after that the .ROM file. Download the files to your computer (Desktop) and start the IP-Setup. Select the files. Update the BIN file first by clicking on the "Update" button, when it's done, update the WEB/ROM file by clicking the associated button. Before updating check that the right IP-number is shown in the "Current IP address" box. If not go to the "IP-address" dialogue and change to the correct IP-address. Updating firmware is only possible when connected to the same LAN, not over the Internet.

1216E_v1.06_2009-06-25.bin	1216EWEB_v1.06_2009-06-25.ROM	Handles Wildcards fq-control, some bugfixes.
1216E_v1.04_2009-05-19.BIN	1216EWEB_v1.04_2009-05-19.ROM	Handles manual control of the relays in combination with CAT control.
1216E_v1.03_2009-04-24.BIN	1216EWEB_v1.03_2009-04-24.ROM	First released version.

